

MONTHLY MEMBERSHIP PROGRESS REPORT

LOCATION KANSAS

District 17 K

Results as of: 5/31/2023

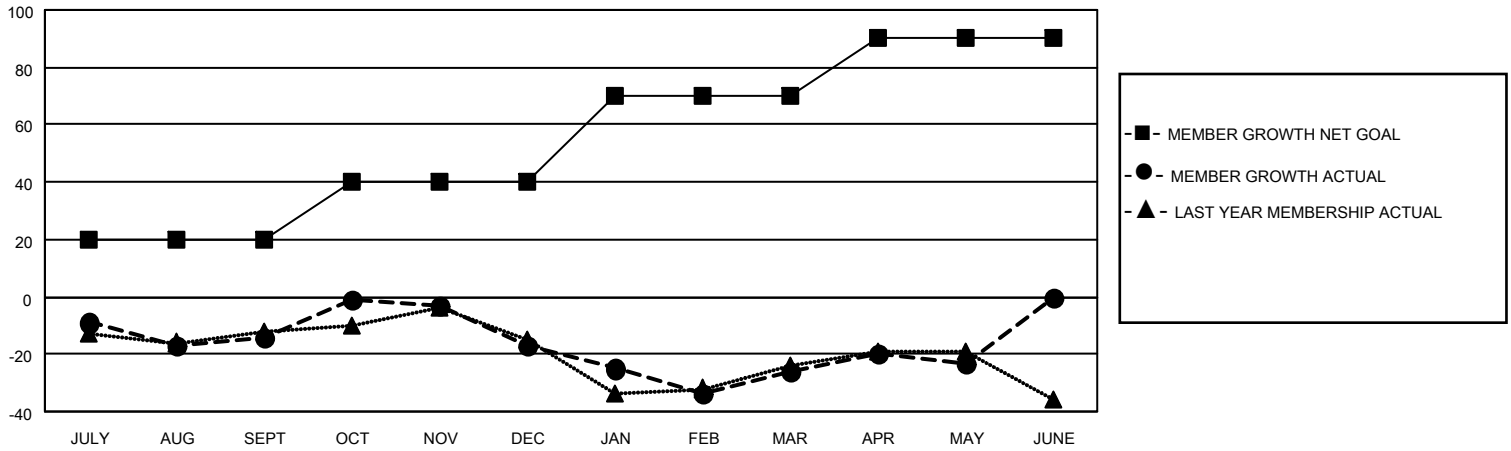
Clubs			
RESULTS FOR 2022-2023			
QUARTER	NEW CLUB GOAL	NEW CLUBS	DROPPED CLUBS
JULY/AUG/SEPT	0	0	3
OCT/NOV/DEC	1	0	0
JAN/FEB/MAR	0	0	1
APR/MAY/JUNE	1	0	0

Members			
RESULTS FOR 2022-2023			
QUARTER	MEMBER GROWTH NET GOAL	MEMBER GROWTH ACTUAL	DROPPED MEMBERS ACTUAL (including transfers)
JULY/AUG/SEPT	20	29	42
OCT/NOV/DEC	20	35	34
JAN/FEB/MAR	30	40	47
APR/MAY/JUNE	20	18	14

GOALS AND ACTUAL NEW CLUBS CUMULATIVE



GOALS AND ACTUAL MEMBERS CUMULATIVE



DROPPED CLUBS: 4

33 CLUBS OF 72 ADDED 1 OR MORE NEW MEMBERS

GENDER DISTRIBUTION

MALE	860 (67.66%)
FEMALE	411 (32.34%)
NON BINARY	0 (0.00%)
PREFER NOT TO ANSWER	0 (0.00%)

DROPPED MEMBERS

[CLICK HERE FOR CUMULATIVE MEMBERSHIP DATA](#)

DECEASED	23
CLUB CANCELLED	1
OTHER	113
TOTAL	137

TOTAL FAMILY UNIT MEMBERS 277

FAMILY MEMBERS PAYING HALF DUES 140